

● Available

Building 4
Floor 1

Area
1 149 m²

- Height (floor to ceiling) – 4,8 m
- Pillar grid – 9,00 x 10,50 m
- Planning grid – 1,50 m
- Raised floor – 200 mm
- Full floor height windows



● Available

Building 4
Floor 2

Area
2 089 m²

- Height (floor to ceiling) – 3,9 m
- Pillar grid – 9,00 x 10,50 m
- Planning grid – 1,50 m
- Raised floor – 200 mm
- Full floor height windows



● Available

Building 4
Floor 3

Area
2 375 m²

- Height (floor to ceiling) – 3,9 m
- Pillar grid – 9,00 x 10,50 m
- Planning grid – 1,50 m
- Raised floor – 200 mm
- Full floor height windows

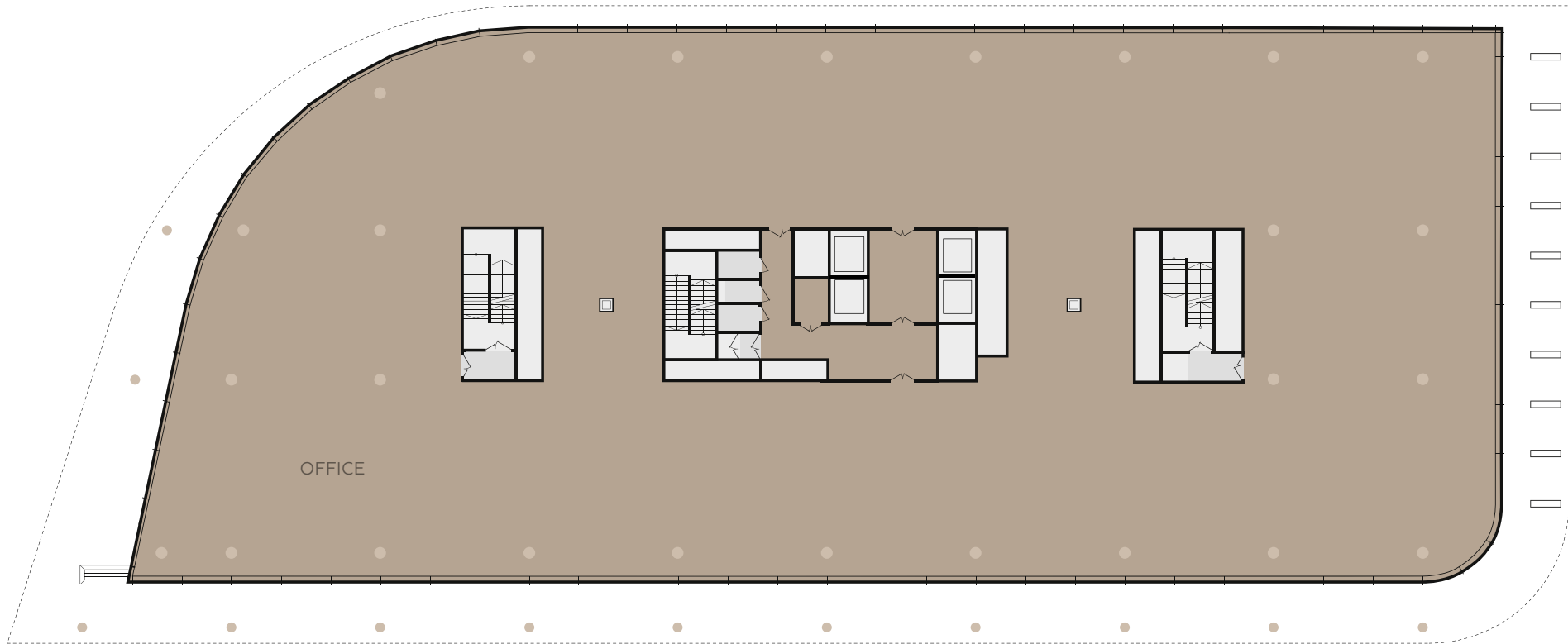


● Available

Building 4
Floor 4

Area
2 375 m²

- Height (floor to ceiling) – 3,9 m
- Pillar grid – 9,00 x 10,50 m
- Planning grid – 1,50 m
- Raised floor – 200 mm
- Full floor height windows



● Available

Building 4
Floor 5

Area
2 375 m²

- Height (floor to ceiling) – 3,9 m
- Pillar grid – 9,00 x 10,50 m
- Planning grid – 1,50 m
- Raised floor – 200 mm
- Full floor height windows



● Available

Building 4
Floor 6

Area
2 374 m²

- Height (floor to ceiling) – 3,9 m
- Pillar grid – 9,00 x 10,50 m
- Planning grid – 1,50 m
- Raised floor – 200 mm
- Full floor height windows

For additional information, please contact

T +7 495 777 555 0

E a.gorokhov@skolkovo-park.com

W www.skolkovoforbusiness.com

A Moscow region, Odintsovo municipality,
town of Zarechye, 2 Vesennaya st.

