

● Available

**Building 1**  
**Floor 1**

Area  
**1 218 m<sup>2</sup>**

- Height (floor to ceiling) – 4,8 m
- Pillar grid – 9,00 x 10,50 m
- Planning grid – 1,50 m
- Raised floor – 200 mm
- Full floor height windows

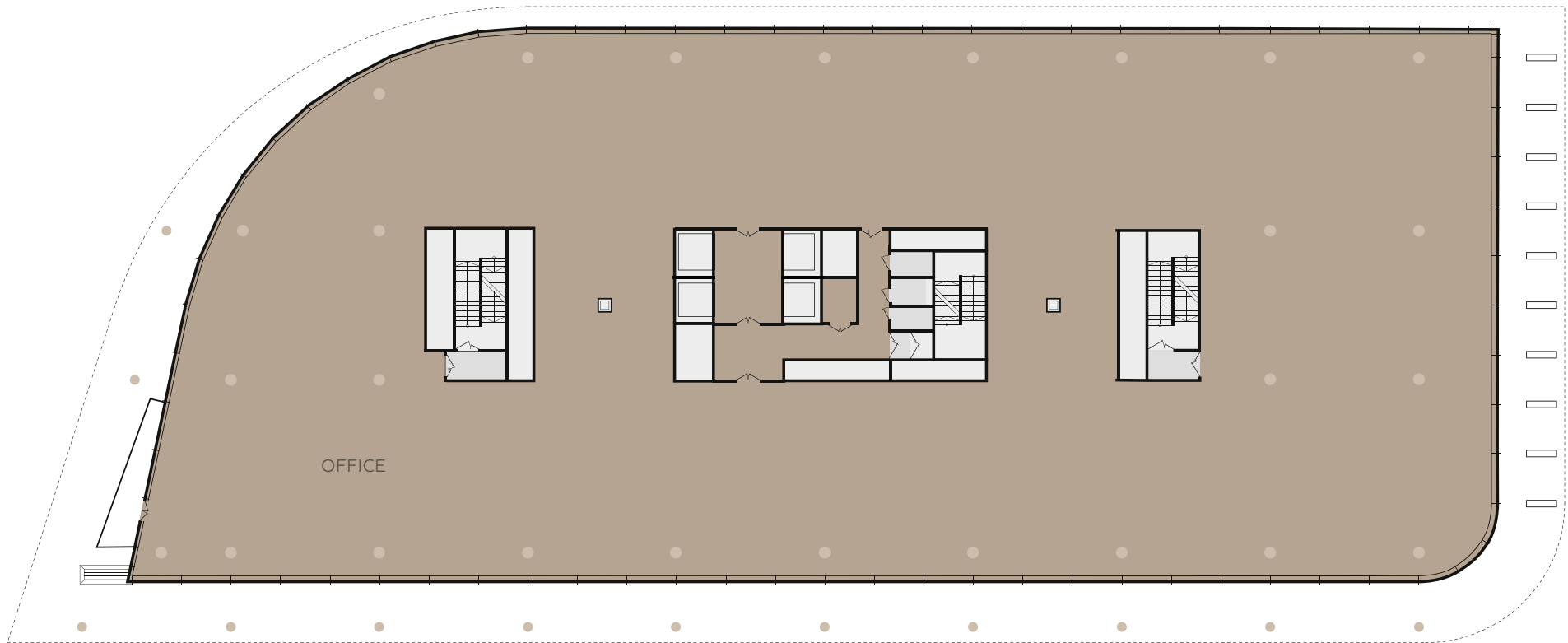


● Available

**Building 1**  
**Floor 2**

Area  
**2 145 m<sup>2</sup>**

- Height (floor to ceiling) – 3,9 m
- Pillar grid – 9,00 x 10,50 m
- Planning grid – 1,50 m
- Raised floor – 200 mm
- Full floor height windows



● Available

**Building 1**  
**Floor 3**

Area  
**2 371** m<sup>2</sup>

- Height (floor to ceiling) – 3,9 m
- Pillar grid – 9,00 x 10,50 m
- Planning grid – 1,50 m
- Raised floor – 200 mm
- Full floor height windows



● Available

**Building 1**  
**Floor 4**

Area  
**2 371** м<sup>2</sup>

- Height (floor to ceiling) – 3,9 m
- Pillar grid – 9,00 x 10,50 m
- Planning grid – 1,50 m
- Raised floor – 200 mm
- Full floor height windows



● Available

**Building 1**  
**Floor 5**

Area  
**2 371** м<sup>2</sup>

- Height (floor to ceiling) – 3,9 m
- Pillar grid – 9,00 x 10,50 m
- Planning grid – 1,50 m
- Raised floor – 200 mm
- Full floor height windows



● Available

**Building 1**  
**Floor 6**

Area  
**2 371** m<sup>2</sup>

- Height (floor to ceiling) – 3,9 m
- Pillar grid – 9,00 x 10,50 m
- Planning grid – 1,50 m
- Raised floor – 200 mm
- Full floor height windows

## For additional information, please contact

T +7 495 777 555 0

E a.gorokhov@skolkovo-park.com

W www.skolkovoforbusiness.com

A Moscow region, Odintsovo municipality,  
town of Zarechye, 2 Vesennaya st.

